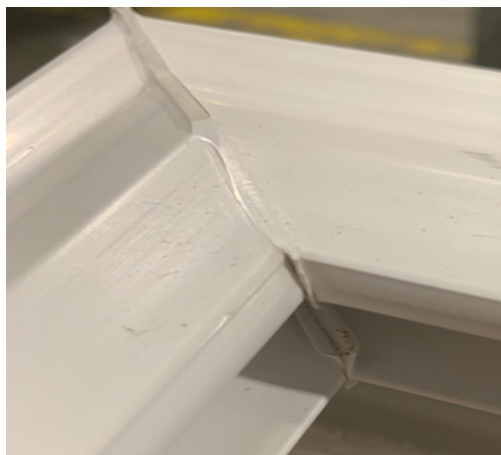


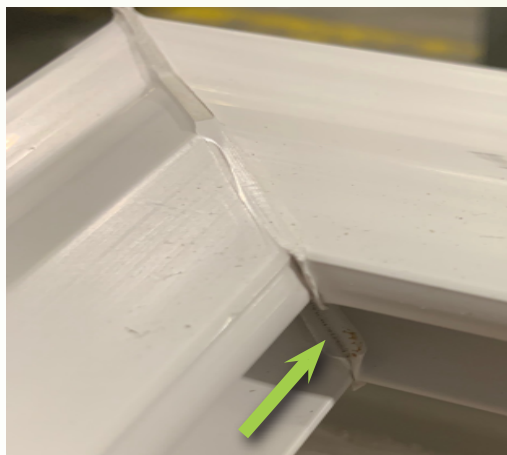
FLEXSCREEN® FIELD INSTALLATION PREPARATION

Instructions on cleaning the screen track to allow FLEXSCREEN to properly seat into window.

Full Screen Only (no prep necessary for Half Screen).



Top of Window Screen Track



Screen Track Weld Flash
Needs to be Removed



Use a Sharp 1/2 Inch Chisel
to Remove the Weld



Remove Weld Flash with Chisel
(Both Left and Right Top of Screen Track)



Flip Window Over and Clean
Opposite Side of Screen Track



Install FLEXSCREEN Into Track



FLEXSCREEN

Simple Design. Damage Resistant. Beautifully Invisible.