

8300 Double Hung Window

Features:

- Accessory groove improves exterior aesthetics
- Sashes tilt in for easy cleaning
- Positive-action cam lock enhances safety (2 locks standard at 27 1/4" or wider)
- Insulated glass panels with optimum thermal air space featuring a warm-edge spacer system
- Half screen comes standard
- Sloped sill reduces air infiltration and accommodates easy water run-off
- Fusion-welded sashes and frame add strength and additional insulation
- Constant force coil balance permits easy sash movement
- Dual push-button night latches provide easy, secure ventilation
- Jamb depth: 3.25"
- Transferable limited lifetime warranty

Custom Options:

- Low-E Glass
- Low-E Glass with Argon Gas
- Ultra Low-E Glass with Argon Gas
- Integrated Nail Fin
- Obscure glass
- Double strength glass
- Optional 5/8" or 1" contoured grid, 5/8" or 3/4" flat grid, and 5/8" contoured valance available
- Aluminum charcoal mesh screen
- Window Opening Control Device (for fall prevention)
- Nine exterior painted colors (white interior only)
- InsulKor™ Multi-Cavity Foam-Filled Frame
- Lifetime glass breakage warranty

Product Performance:

AAMA 101 Results:

| Window Size | AAMA Rating (psf) | Air (cfm/ft ²) | Water (psf) |
|---|-------------------|----------------------------|-------------|
| 48" x 78" (X/X) | LC-PG25 | 0.10 | 5.43 |
| 36" x 74" (X/X) | LC-PG35 | 0.10 | 5.43 |
| 109" x 74" (X/X – X/X – X/X DH Muller Triple) | DP35 | 0.13 | 5.43 |

Product Dimensions:

| | |
|-----------------------|------------|
| Vinyl Wall Thickness: | 0.062" |
| Typ. Glass Thickness: | 0.750" |
| Jamb Depth: | 3.250" |
| Mullion Adder: | |
| Standard: | 0.125" |
| High Performance: | 0.2500" XX |
| | 0.3750" XO |
| | 0.6250" OO |

Rough Opening:

Window Width + 1/4"
Window Height + 1/4"

Size Restrictions:

| | Min: | Max: |
|---------------------------|---------|------|
| Width | 14 1/2" | 54" |
| Height | 23 1/8" | 91" |
| (Max. United Inches 126") | | |



8300 Double Hung Window

Egress Formulas:

Egress Width $\geq 20"$ and Egress Height $\geq 24"$ and Egress Area $\geq 5.7 \text{ ft}^2$ required to meet egress.

Egress Width Formula = Window Width – 5"

Egress Height Formula = (Window Height/2) – 6.250" (1 Coil)

(Window Height/2) – 7.875" (2 Coils)

(Window Height/2) – 9.500" (3 Coils)

Egress Area Formula = (Egress Width x Egress Height)/144

Screen Formulas:

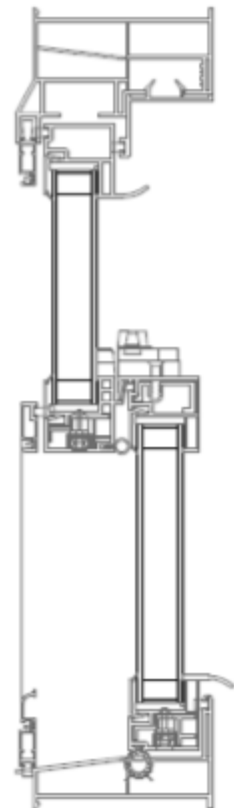
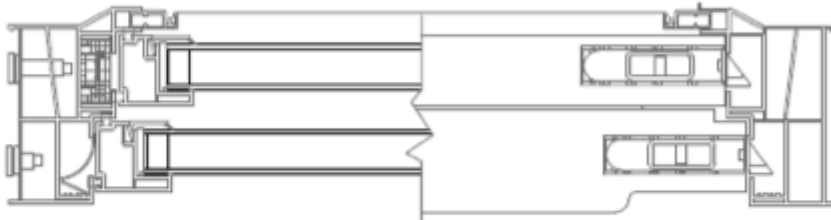
Window Width – 4.500" (Full Screen)

Window Height – 3.250" (Full Screen)

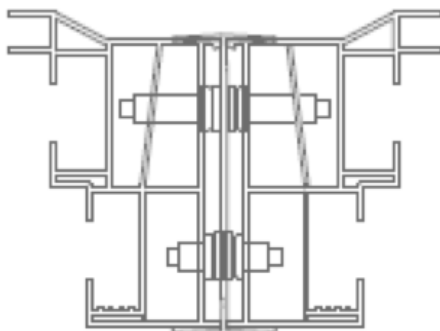
Window Width – 4.4375" (1/2 Screen)

(Window Height/2) – 0.500" (1/2 Screen)

Cross Sections:



Standard Mullion Assembly:



High Performance Mullion Assembly:

